



ATTENBOROUGH
ARTS CENTRE

Technical Pack

Attenborough Arts Centre



Supported using public funding by
**ARTS COUNCIL
ENGLAND**

See Art / Make Art

Introduction

This pack is designed to offer the user a detailed overview of the technical capabilities that the Attenborough Arts centre is able to provide. This includes lighting and sound technical equipment through to scale drawings of the building to help you identify which space may be suitable for your needs.

If you have any further questions regarding your use of the centre then please contact Daisy Edwards on 0116 223 1534 or by email at de62@le.ac.uk.

Contents

Page	Title
3	Diana Princess of Wales Hall Specification
3	Sound
4	Lighting
5	Other information
6	Parking
6	Catering
6	Shower and changing
7	Contact Us
8	Appendix 1 - Attenborough Arts Centre Ground Floor Plan
9	Appendix 2 – Attenborough Arts Centre First Floor Plan
10	Appendix 3 - Lighting Rig Sockets, Dimensions and bars
11	Appendix 4 – Lighting Rig Bar by Bar
12	Appendix 5 - Attenborough Arts centre Diana princess of Wales hall dimensions and measurements

Diana Princess of Wales Hall Specification

The Diana Princess of Wales Hall is a flexible space with temporary tiered seating and a modular staging system. The Hall has a hardwood timber strip sprung floor and is designed with good acoustics.

Dimensions

The main Hall area is 10.7m wide x 10.8m deep. The room reduces in size at a height of 2.5m to approximately 6m, the lighting grid is 4.9 m from the floor. The reduction in size of the room effectively gives a performance space of 6m wide by 5m deep. See appendix for Diagram and photos. The Hall has two side areas with partition doors, each approximately 8m x 5m (see Appendix 5 for diagram). The Drama side room is largely used as a green room/ backstage area and to store equipment and the Music side room contains raised seating and is also used for storage. Depending on the layout and requirements for a performance these may be utilised in part.

Seating Arrangements

Seating arrangements are subject to individual event requirements and as such capacities may vary. As a guide, Theatre style can seat up to 100, and Cabaret seats around 64. Dance Floor shows usually have an audience of 50/60. We have two large moveable raked seating units that seat between 26/32, and rows of seats that can be arranged flexibly on the flat.

Sound Equipment

The Hall has a fixed PA system consisting of:

- 4 x Electrovoice SX-100, 200W Speakers (1 pair at either end of the Hall)
- 1 x Yamaha MGP16X 16Channel Mixing Desk with FX
- 2 x Yamaha Power Amplifiers
- 1 x Stage Box 12+4 on stage left.

We have the following equipment to accompany this:

- 2 x 15" floor monitor speakers
- 2 x 12" pole mounted 200w speakers with stands
- 1 x Crown amplifier
- 1 x DVD Player
- 1 x Twin CD Player
- 2 x Behringer Ultra-DI100 Active DI Box

- 2 x Behringer Ultra-DI120 2ch Active DI Box
- 3 x Shure SM58 Microphones
- 2 x Shure SM57 Microphones
- 3x Sennheiser ew100/300 radio systems with belt packs or hand held radio mics
- Small selection of Microphone stands

This system can also connect to our fixed projection system and laptop computers. Other or additional equipment is available through Audio Visual Services with advance notice and at an additional charge. Supply of such equipment would be subject to VAT. **Please note: We do not carry a mac laptop OR CONNECTORS/LEADS of any kind or have anything that can run Q lab.** Please bring your own equipment to do this if needed.

- The Hall also has an induction loop. Consisting of an Ampetronic ILD122 Induction Loop Amplifier with a feed from the main out of the PA system.

Lighting Equipment

The Hall is naturally lit by a central skylight and a strip of windows along the side wall. Blackout curtains surround the space and the skylight can be covered by an electronically operated blind.

Specialised lighting effects can be achieved using the lighting rig. This comprises of a fixed rectangular grid and two cross bars suspended from the ceiling, height above the floor = 4884mm, see appendix for details.

We have the following lamps:

- 4 x ETC Source 4 Jnr 25/50
- 6 x Strand Prelude 28/40 profiles
- 6 x Strand Prelude 18/30 profiles
- 10 x Strand Quartet F Fresnels (650W)
- 5 x Strand Quartet PC (650W)
- 12 x Stagg Pro 64 LED Par Cans
- 4 x B size gobo holders
- 4 x M size gobo holders

The lighting is controlled, by a Strand 200 Plus, 24/48 desk. There is a 24 channel dimmer rack connected via a 32 way Patch system to 24 high level and 8 low level 15a sockets. There are also 12 LED par cans, 4 of these act as the house lights.

Please note: if you are hiring the venue, or are coming to us as an associate artist, a Technician and additional equipment may be hired through Attenborough Arts with advance notice and at an additional charge. Use of the rig or sound system without also paying for our house technician is at the discretion of the Venue officer or Programming officer, and will require the visiting technician to provide proof of their insurance, competence and a completed technicians' agreement. Please note, house ladders may not be used by any external technicians so they may not be able to rig or focus certain lights.

AAC runs a standard rig policy (see bar by bar p.11), should you require a different lighting plan to this, ladders and a technician may be hired at an additional charge. The same would need to be hired at the end of the event to return the lighting to the original positions. If the rig is not returned to its' original state a fee of £80 will be charged to allow us to do this.

The lighting rig is currently filled to the maximum weight capacity so any items to be added to the rig would need to be balanced with the removal of lights.

We have 2 side booms and some floor plates that can be hired at an additional cost of £5 per pair.

Projection

The Hall has a fixed projector and electric drop down screen suitable for presentations or multi-media performance work. The system can connect to DVD or a laptop. There are vga points at both ends of the room.

Staging

Raised staging is constructed using a system of metal frames and wooden boards (Q Build). Each board creates a surface of 0.9m x 0.75m. The frames come in two different heights, 36 units at 0.2m and 27 units at 0.35m. The frames can be safely stacked on top of each other to create different levels. Frames can be stacked no more than 3 frames high. We have an access ramp, guard rails and kick plates which can be fitted to the staging.

Dance Floor

This is a Harlequin black sprung overlay that comes in rolls. 1.5m x 9m (6 rolls). **Please note: venue hires may need to pay for the laying of this floor. Please speak to the venue officer for more information.**

Music Stands

We have 20 music stands that can be used as needed. Please speak to the venue officer for more details.

Piano

We have one Grand piano – A beautiful Bosendorfer. If you wish to play this we do ask that you are suitable graded or qualified. We also have one upright piano and two electric pianos for general use.

Green Room

The Hall does not have an official 'green room' space, however, we have a small back-stage area ('Drama side room' on ground floor plan), where bags etc. may be kept that can be used as a small changing facility. This space is not secure and we do not provide secure storage. This has direct access to the Hall and has easy access to toilets and showers/ changing facilities.

Parking

At evenings and weekends parking is free at the Medical Sciences Building car park next door. On weekdays there is pay and display parking on Lancaster Road and in Victoria Park (De Montfort Hall, entrance in Granville Road). Subject to availability we may be able to arrange a visitor parking for performers in the Medical Sciences Building car park. Please let us know in advance if you require this.

We also have four car parking spaces for disabled blue badge holders only in front of the building. Please let us know in advance if you wish to use one, so that a space can be booked for you.

Catering

The onsite Attenborough Cafe offers a range of drinks, sandwiches and meals and can be purchased over the counter on the day. Should you wish to book specific catering for your event, you will need to order in advance directly with the University of Leicester's catering providers. Please visit <http://www.le.ac.uk/catering/> or contact cateringreservations@le.ac.uk for more information. Please note, catering for in house events must be provided by our catering services. You are not permitted to bring food or drink or any other outside catering in to bookings or events.

Shower and Changing

Attenborough Arts centre has a fully accessible shower and changing facility for use by performers and visitors. Attenborough Arts centre does not supply towels or washing supplies so these must be provided by the company should they wish to make use of this feature. Attenborough Arts centre does not have any Laundry facilities but can provide a list of laundrettes close by if needed.

Contact Us

For general enquires please contact us at reception:

t: (0116) 252 2455

e: arts-centre@le.ac.uk

For operational / general performance questions or information relating to the technical requirements or running of your event please contact Daisy Edwards, Venue Officer:

t: (0116) 223 1534

e: de62@le.ac.uk

For technical information or to discuss your technical requirements in more detail please contact Steve Escott, Theatre and Arts centre technician:

t: (0116) 252 2455

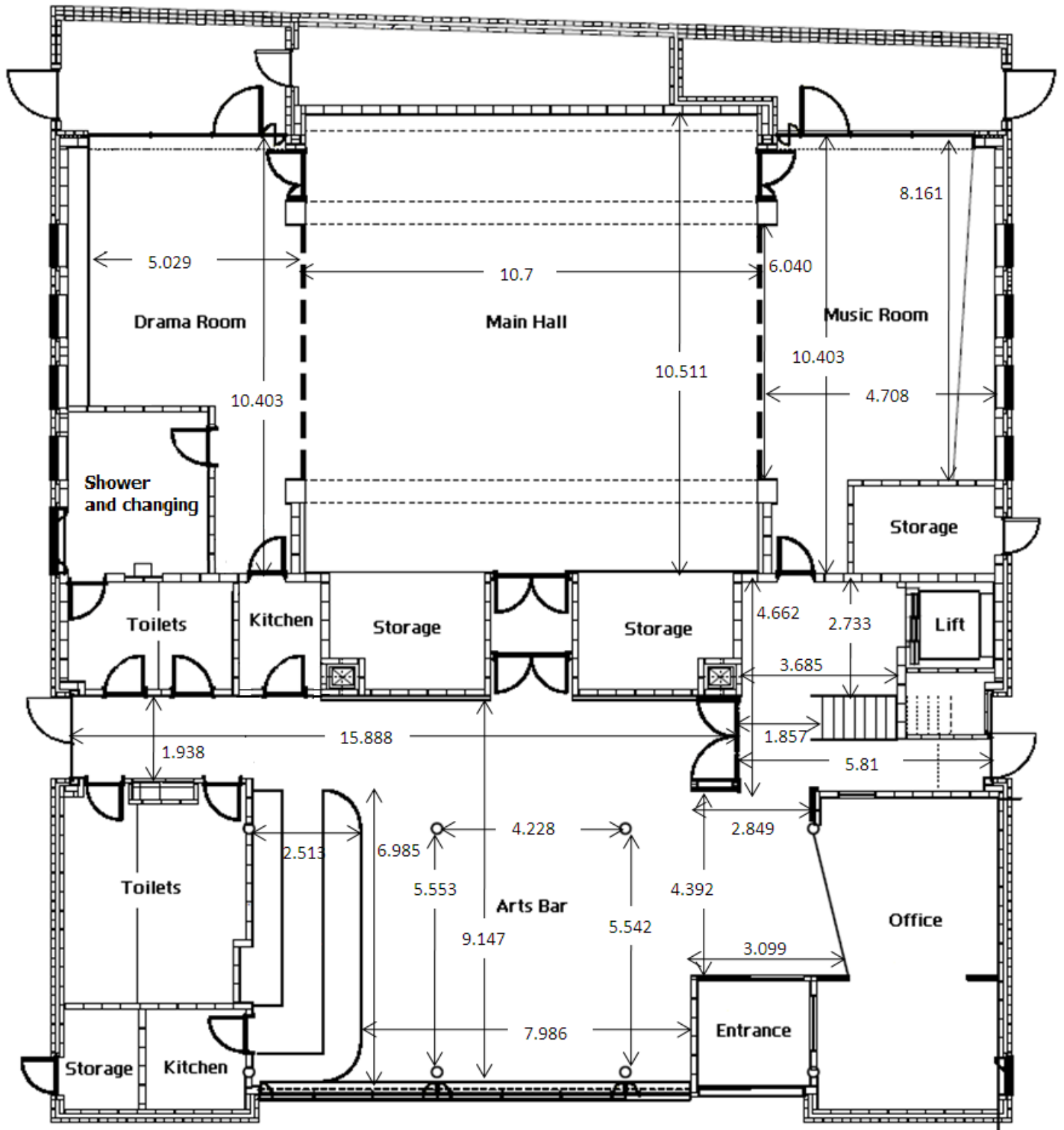
e: se135@leicester.ac.uk

Please note Steve only works a few days a week, usually on performance days so may not always be able to respond to you immediately. If this is the case, please contact Daisy Edwards who may be able to help.

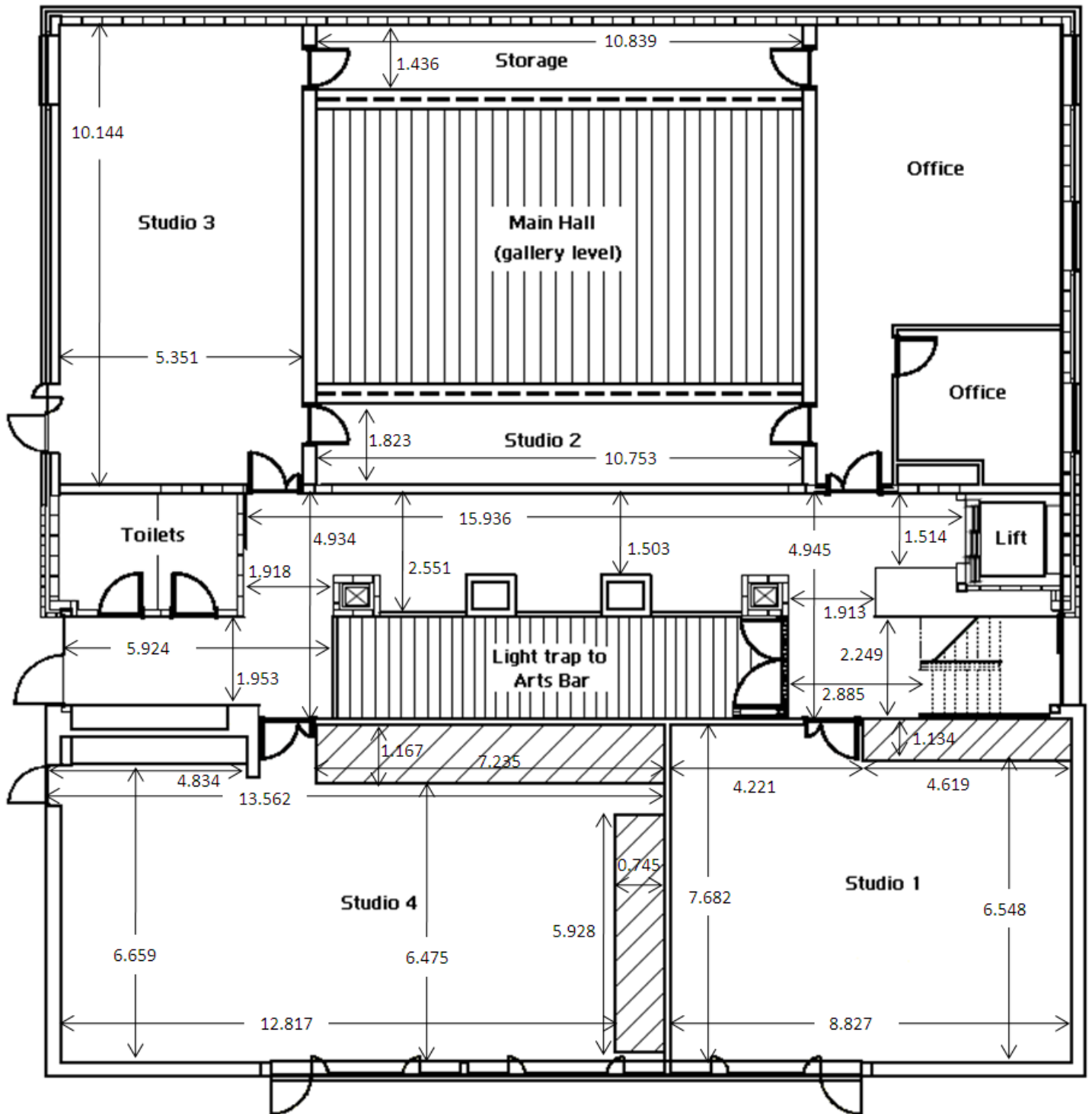
The Attenborough Arts Centre also has 3 other spaces that can be used or hired; A dance and rehearsal studio, Studio 1 (capacity 40) which has a sprung floor, mirror walls, sound and a projector available, and two arts studios: Studio 3 (capacity 18) and Studio 4 (capacity 25). For more information on these please contact Daisy Edwards.

Appendix 1

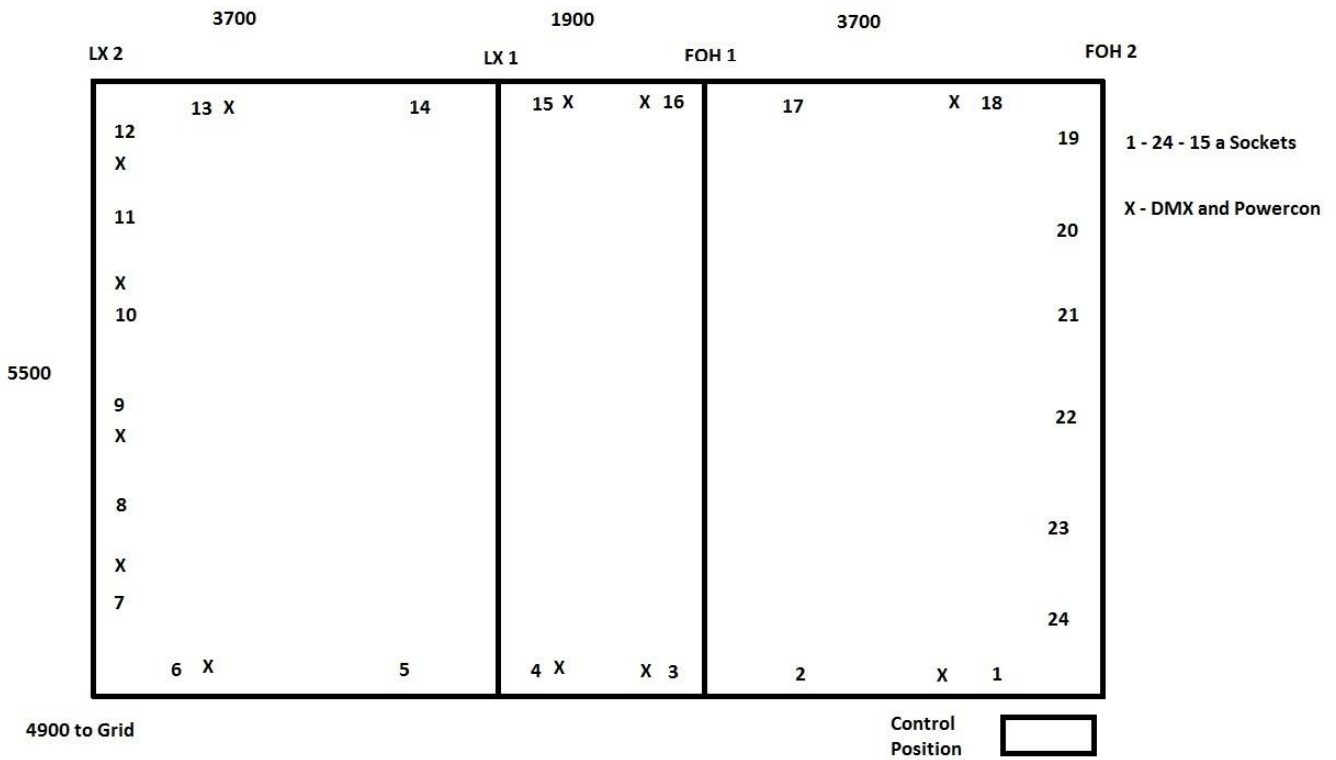
Richard Attenborough Centre Ground Floor Plan



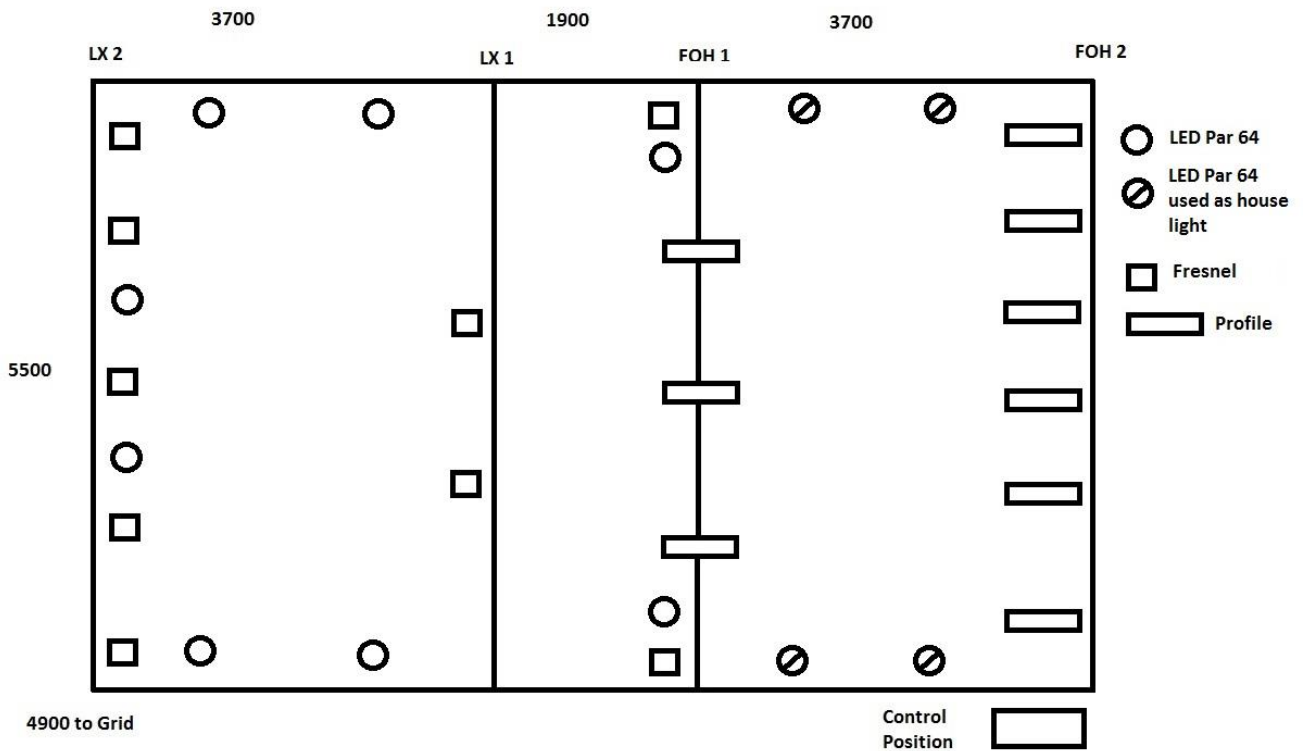
Appendix 2
Richard Attenborough Centre First Floor Plan



Appendix 3a Lighting Rig Sockets, Dimensions and bars



Appendix 3b Standard Rig Plan



Appendix 4 Attenborough Arts centre Lighting Rig Bar by Bar

FOH 2

A warm wash, (Three profiles, Prelude 28-40)

A cool wash, (Three profiles, Prelude 28-40)

Between FOH2 and FOH1 Four linked LED Pars used for house lights

FOH 1

3 Prelude Profiles, spotting, SL C SR, a Fresnel Warm Wash, two LED Pars for front colour

LX 1

Two Strand Quartet PC performance area wash (Cool).

Between LX1 and LX2 Four linked LED Pars for side colour

LX 2

Two LED Pars for rear colour

5 individually dimmed Quartet PC

Appendix 5 Attenborough Arts centre Diana Princess of Wales hall dimensions and measurements

